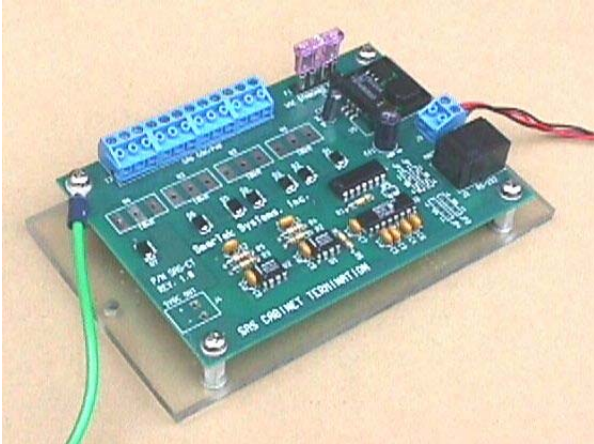
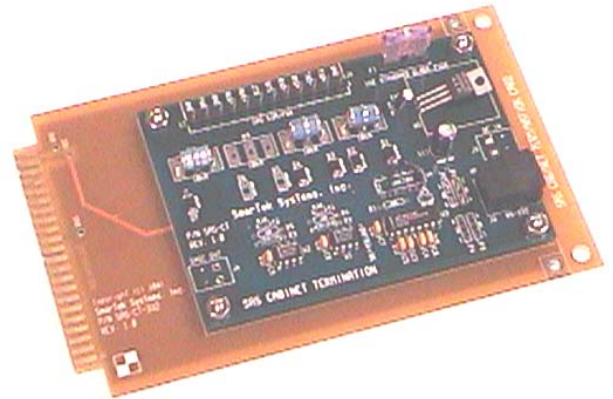




## Cabinet Termination of Home Run Cable



**Shelf or Back Panel Mount SAS-CT**



**Type 170/TS Card File SAS-CT**

### Cabinet Termination and Power Supply for SAS-1 Hardwired Systems and SAS-1 Base Station Radios

The SAS-1 CT is a small circuit card mounted inside the controller cabinet providing the termination point for the home run cable from the SAS-1 or remote SAS RF Modem. The home run cable is terminated with a high quality “pluggable terminal block connector” which is plugged onto the SAS-1 CT. The SAS-1 CT also provides electrical protocol conversion (RS-422/485 to RS-232) to facilitate connection to an RS-232 port of the cabinet controller, serial connection, or the RS-232 port of the SAS-Relay Interface (SAS-RI). The SAS-1 CT provides a single stage (solid state) and an additional stage (gas tube) of surge protection for all data and power lines.

- Shelf or Panel mount Dimensions 5”x3.5”x1.5”
- Type 170/TSS version Dimensions 4 1/2”x 7 3/8” x 15/16”.
- RS-422/RS-485 to RS-232 Conversion of SAS-1 signals
- Solid State Surge on all Data and Power Lines
- Gas tube surge on all data and power lines
- 12 Position “pluggable” terminal block for SAS-1 Home Run
- RJ-45 RS-232 Connection for computer set-up of SAS-1 or connection to SAS-RI
- Fused Power input
- Shock NEMA TS2-2.1.10, Vibration NEMA TS2-2.1.9
- Operating Temperature -20 Deg C to 75 Deg C