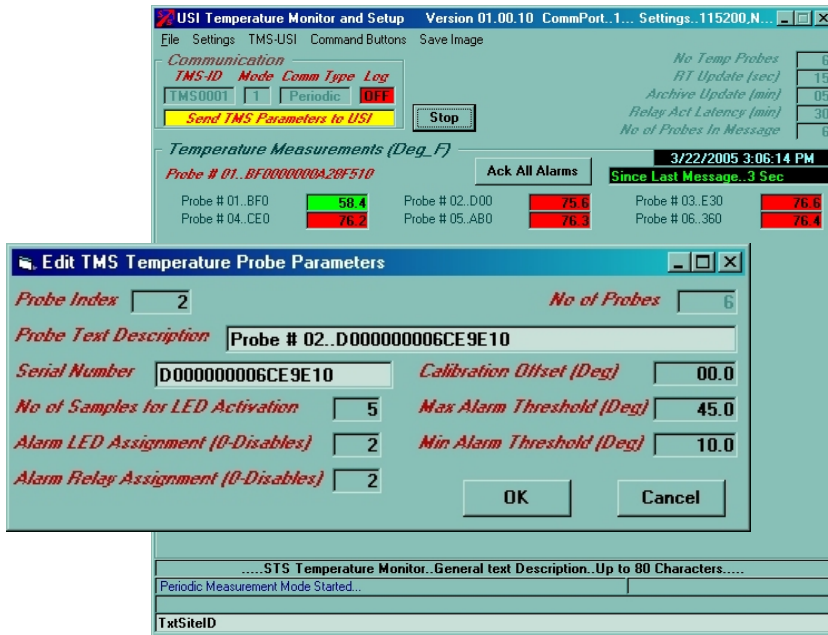


SmarTek TM-2 System Features

Automated Temperature Data Recording. The TM-2 continuously samples up to 60 solid state temperature sensors. Each sample is compared to alarm threshold criteria set by the user and is sent to a real time Temperature Situation View shown below. The TM-2 stores several weeks' data in non-volatile memory. This data can be transferred to a PC directory on a hard drive or CD-ROM—much easier to manage and store than a file cabinet of log sheets!



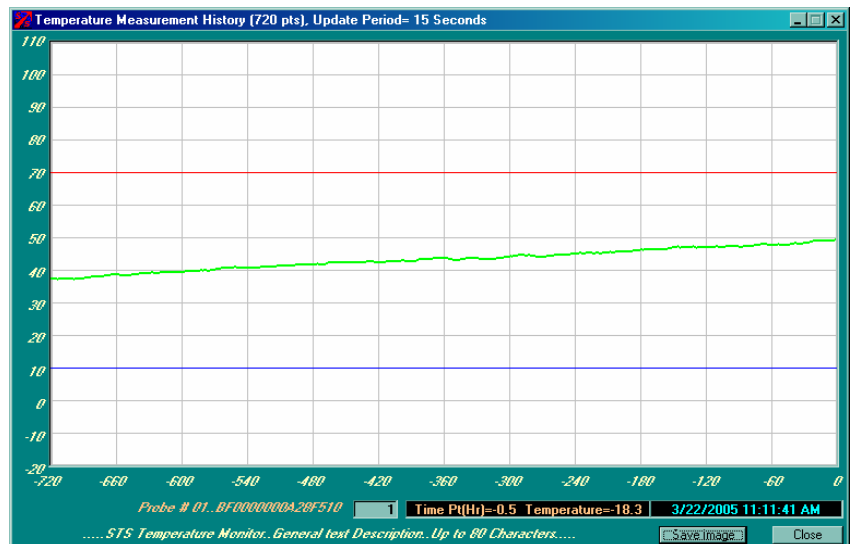
Quick system setup Table. Each sensor has a unique digital ID. Using the **TM-2 Setup Manager** (software which is included) allows the facility manager to set the upper and lower thresholds for 60 temperature sensors. As shown to the left, alarm delay times to allow for normal freezer defrost cycles, set by increasing the number of sample periods or “hits” above a threshold, are easily set here as well. This display also allows the user to organize the sensors into 6 separate zones for alarm indication by zone.

Real Time Operation Interface.

Software that allows the TM-2 to communicate directly with the manager's PC is included. This software provides a restaurateur a real time display of his operation and a data archive manager. The software provides visibility to plant current storage conditions via color coded boxes based on alarm set points. Historical data may be viewed graphically by clicking on a data measurement reading, and archival data is stored with date/time stamps for automated record keeping.

Optional Features

The TM-2 hardware and software are flexible and designed to meet the individual needs of a specific user's site, including automated reporting to a facility manager or owner of an alarm condition. After the programmed reporting delay, a relay in the TM-2 may trip an existing external alarm or security system, or an optional auto-dialer may be used to call either a service technician's phone or pager to deliver a message. Up to four telephone numbers or two pagers may be dialed.



Optional Features Continued

For remote monitoring via LAN, the TM-2 may be connected to the SmarTek System's Device Server (DS-1). The DS-1 provides an IP address for the TM-2, allowing a manager of several systems to remotely monitor a facility's cold storage from a central location. Data archives and remote set-ups are available to the user just as if he was connected directly to the TM-2 on site.

Price List



TM-2 Hardware and Software \$1495.00



Auto-Dialer \$165.00



LAN Device Server (DS-1) \$395.00